



*Thanks for registering for the 2019 Albany Park to Point Event on Sunday 20th October 2019*

## WHAT YOU NEED TO KNOW...

### ENTRY FEES & EVENT OPTIONS:

Event Options, Age Requirements & Entry Fees:

Event	Age Limits	Entry Fee
10km	10 years & Over	\$30
5km	6 years & Over	\$20
2km Kids Dash	6-8 years 9-11 years 12-14 years	Free

*\*\* All events will be timed with "Chip Timing" by [Idle Timing](#)*

### PRIZES:

All event finishers will receive a special finishers medal.

### REGISTRATIONS:

Online registrations will be taken through "Register Now", Click on the following link to register: <https://www.registernow.com.au/secure/Register.aspx?E=35521>

- **ONLINE ENTRIES CLOSE:** Friday 18 October 2019 at 6.00pm AWST.
- **LATE ENTRIES** will be accepted on Saturday 19th October 2019 at the Albany Athletics Club Rooms, at the corner of North Rd & Sanford Rd, Albany. Between 10:00am- 4:00pm. (Also known at the Mike Biddulph Athletics Ground)
- You must apply in Person **Only** and Cash **Only** with a Late Fee of \$15 payable.

\*Please Note: Late Fee **DOES NOT** apply to 2km Kids Dash event.

**All Entry fees are Non-Refundable and Non-Transferable**

## EVENT LOCATION:

The 10 km Event starts at ANZAC Peace Park and finishes at Emu Point.

The 5 km Event starts at Middleton Beach and finishes at Emu Point.

The 2 km Kids Dash starts and finishes at Emu Point.

## COURSE MAPS:

**\*\*PLEASE NOTE: COURSE MAPS ARE SUBJECT TO SLIGHT CHANGES.**

### **10KM COURSE MAP**



**START TIME:**  
8.30am



**STARTING POINT:**

ANZAC Peace Park, at the foot of the hill where York Street meets Princess Royal Drive.

**FINISHING POINT:**

Emu Point

**COURSE DESCRIPTION:**

Starting on the grass area at ANZAC Peace Park, follow the footpath between Entertainment Centre and Due South, crossing the road, head towards Boatshed Markets, onto Princess Royal Dr, onto Brunswick Rd. Entering the end of the Board Walk/Cylce Path. All the way to Middleton Beach. Then continuing on the path all the way to Emu Point. Finishing in front of Emu Point Cafe on the grass area.



# 5KM COURSE MAP



## START TIME:

9.00am

## STARTING POINT:

Middleton Beach

## FINISHING POINT:

Emu Point

## COURSE DESCRIPTION:

Starting at Middleton Beach follow the pathway towards Emu Point. Finishing in front of Emu Point Cafe on the grass area.



# 2KM COURSE MAP

## START TIME:

- 12-14yrs - 10.00am
- 9-11yrs 10.02am
- 6-8 yrs 10.04am

## STARTING POINT:

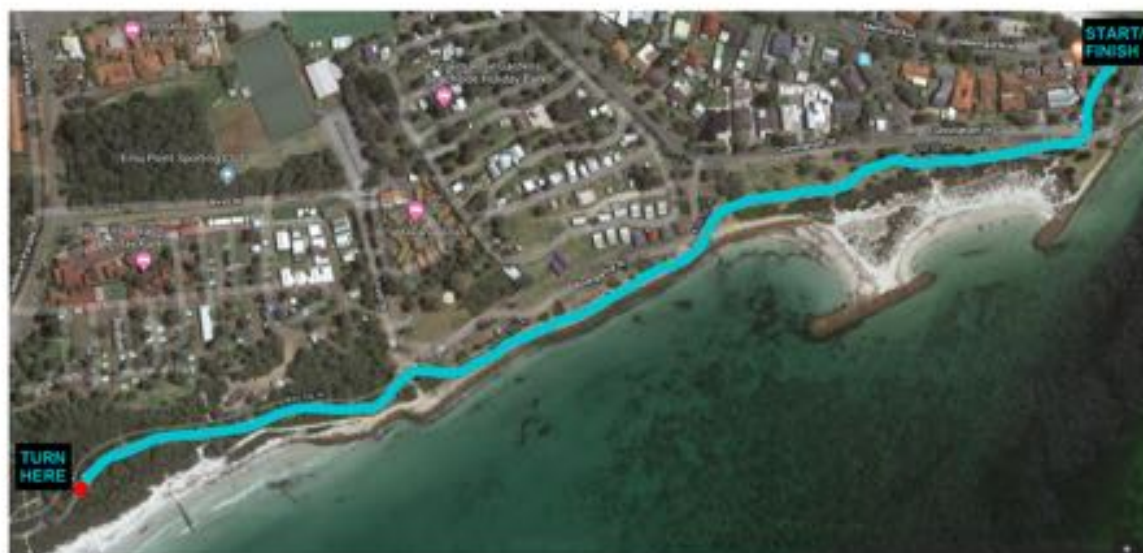
Emu Point

## FINISHING POINT:

Emu Point

## COURSE DESCRIPTION:

Starting at Emu Point, following the pathway towards Middleton Beach. Turning at the 1km TURN HERE marker





# **BIB PICK UP and RACE DAY SCHEDULE OF EVENTS:**

## **\*\*IMPORTANT NOTICE\*\* FOR 2KM ENTRANTS ONLY:**

Runners in the 2km kids' dash will now **NOT HAVE RACE BIBS**. So.....

1. **Don't come to Bib Collection on Saturday or Sunday** if you only have runners in the 2km kids' dash, as it'll be a wasted journey!
2. No change to the arrangements for 5km and 10km events you still require to pick up your race bib.

## **SATURDAY 19<sup>th</sup> October 2019 – BIB PICK UP:**

10.00am - 4.00pm **Bib Collection** and **Late Registrations** are available on Saturday 19<sup>th</sup> October from the Albany Athletics Club Rooms, at the corner of North Rd & Sanford Rd, Albany. (Also known at the Mike Biddulph Athletics Ground)

***PLEASE NOTE: All entries are non-refundable & non-transferable and a "Late Fee" applies to late registrations made on this day.***

## **SUNDAY 20<sup>th</sup> October 2019 – RACE DAY:**

- 7.00am Race Bib Collection from Anzac Peace Park
- 8:00am Race Bib/Number collection closes
- 8:15am 10km Compulsory Race Briefing at ANZAC Peace Park
- 8:30am 10km Starts at Anzac Peace Park
- 8.45am 5km Compulsory Race Briefing at Middleton Beach
- 9:00am 5km Starts at Middleton Beach
- 9.45am 2km Compulsory Race Briefing at Emu Point
- 10:00am Kids 2km Dash Commences -  
AGE GROUP START TIMES:
  - 12 -14 years 10.00am START
  - 9 - 11 years 10.02am START
  - 6 - 8 years 10.04am START
- 11:30am Presentations and spot prizes will commence

## **TOILET FACILITIES:**

There are public toilets located at the Harbour, Middleton Beach and Emu Point.

## **EVENT CONTACTS:**

Event is presented by Albany Athletics Club Inc.

Event Coordinators – George DuToit: 0437 673 315 and Chris Langslow: 0439 918 889

Email: [albanyaths@hotmail.com](mailto:albanyaths@hotmail.com)

Website: [www.albanyathletics.com.au](http://www.albanyathletics.com.au)

Facebook: <https://www.facebook.com/albanyaths/>

# A BIG THANK YOU TO OUR MAIN SPONSORS:



***We look forward to seeing you on Race Day and Thank You for supporting Albany Athletics Club for our 2019 Park to Point Event.***